

DATE:  
MAY. 2011

SHEET:  
S1.0

FILE:  
KC

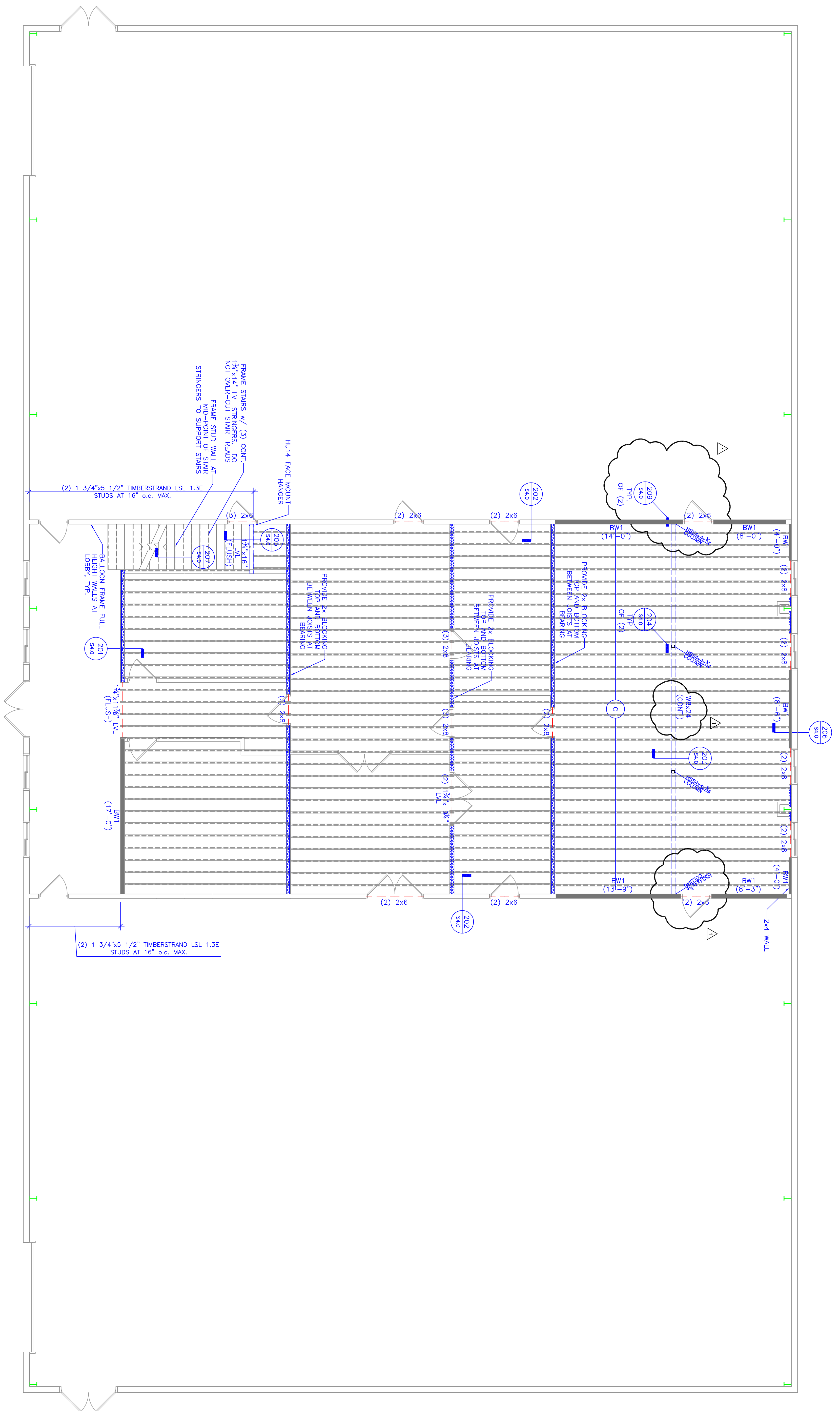
DRAWN BY:  
RMD

**TC ENGINEERING, PC**  
 A "DESIGN-BUILD" FIRM  
 EXCELLENCE...ON TIME!  
 DANIEL W. THEBEAU, P.E.  
 P.O. BOX 55, KANAB, UTAH 84741  
 (435)644-2031 (888)644-2031  
 (435)689-0155

**KC FAIRGROUNDS BUILDING  
 FOUNDATION PLAN  
 KANE COUNTY, UTAH**

SCALE= 3/16"=1'-0"  
 REDUCE SCALE BY 1/2 FOR 11x17 DRAWINGS

DATE:	REVISION:
5/16/11	INITIAL DESIGN
	OWNER REVIEW
	CITY APPROVAL
	FOR CONSTRUCTION



DATE:  
MAY. 2011

SHEET:  
S2.0

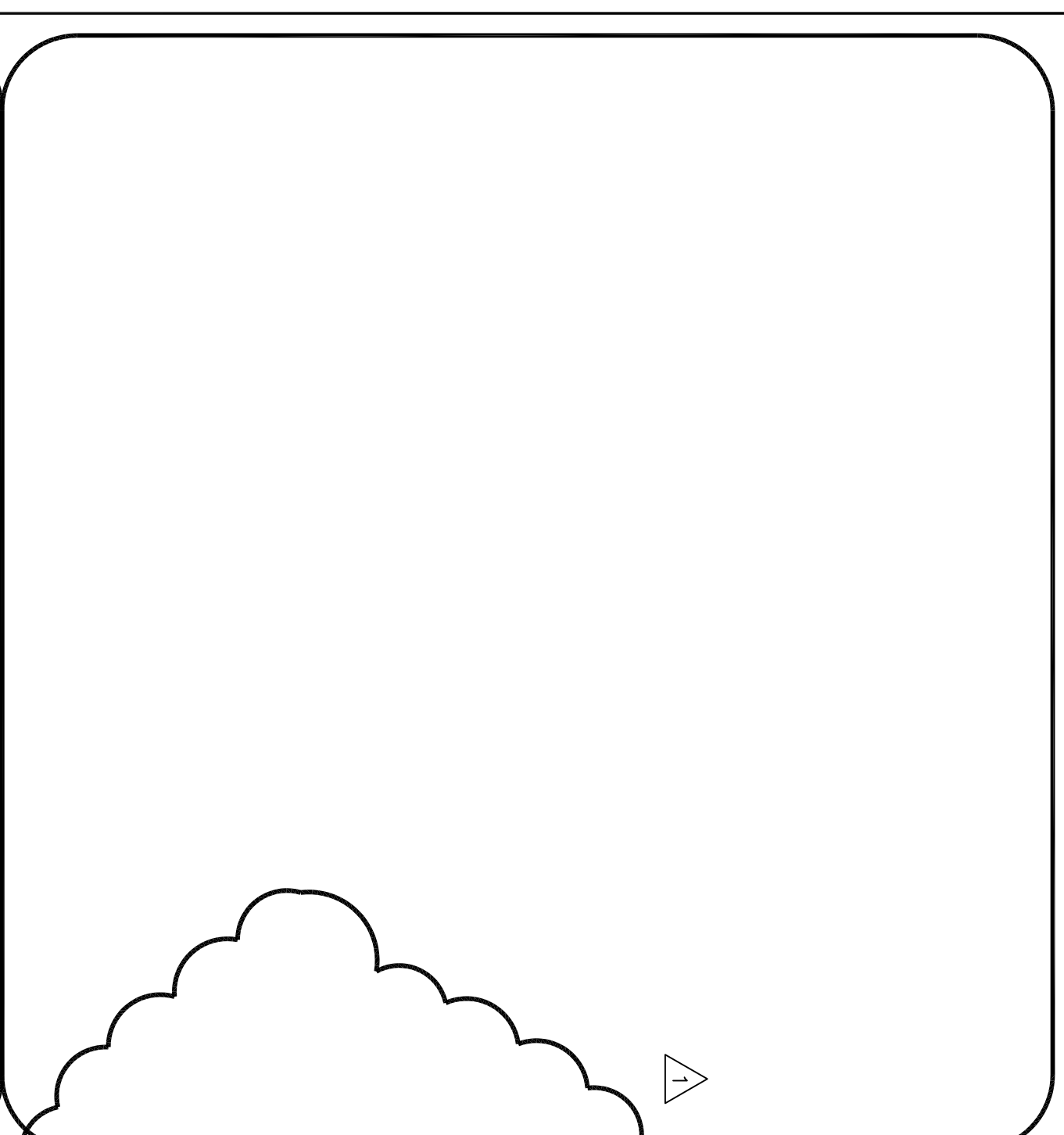
FILE:  
KC

DRAWN BY:  
RMD

**TC ENGINEERING, PC**  
 A "DESIGN-BUILD" FIRM  
 EXCELLENCE...ON TIME!  
 DANIEL W. THEBEAU, P.E.  
 P.O. BOX 55, KANAB, UTAH 84741  
 (435)644-2031 (888)644-2031  
 (435)689-0155

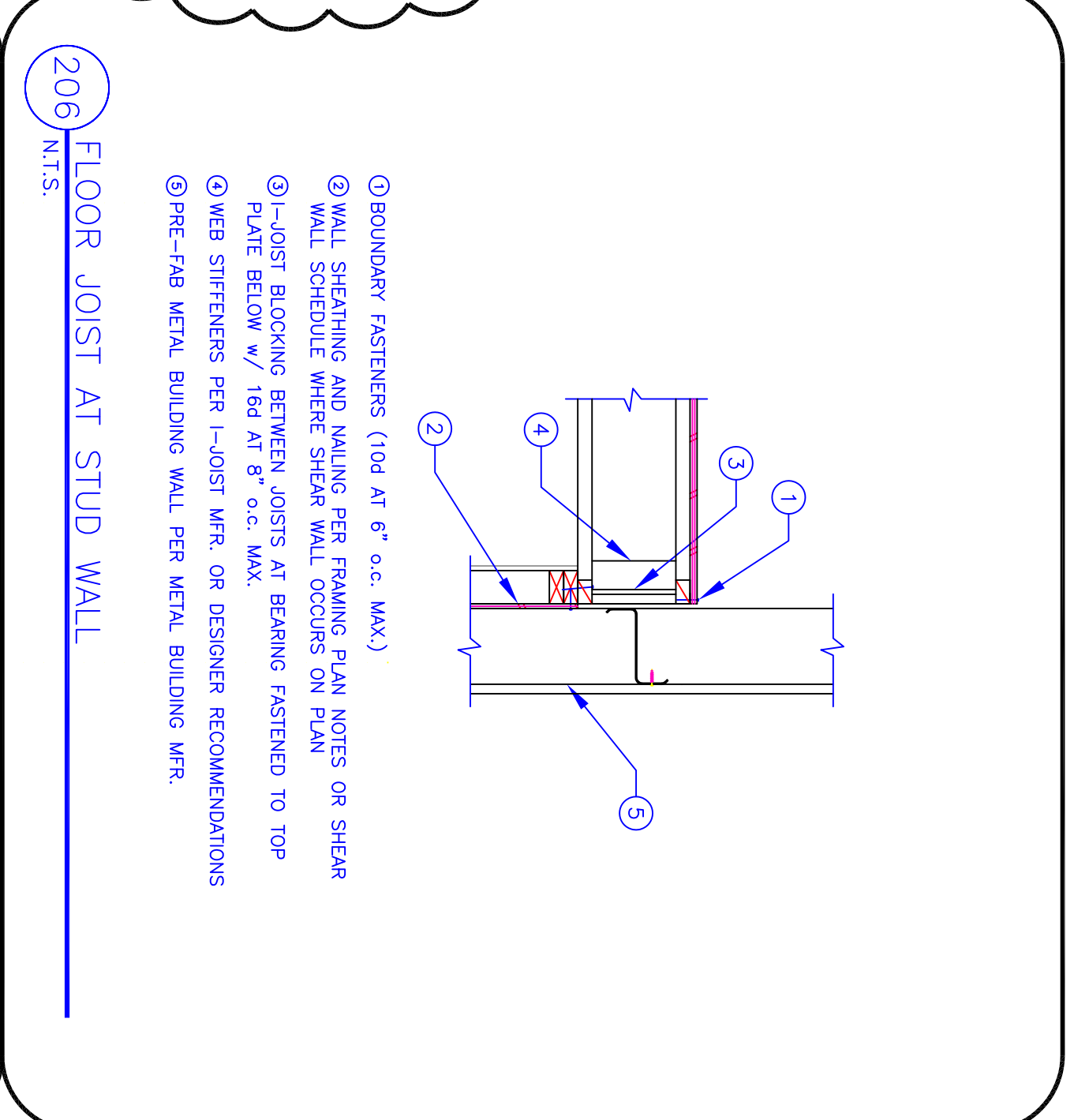
**KC FAIRGROUNDS BUILDING**  
**FLOOR FRAMING PLAN**  
**KANE COUNTY, UTAH**  
 SCALE= 3/16"=1'-0"  
 REDUCE SCALE BY 1/2 FOR 11x17 DRAWINGS

DATE:	REVISION:
5/16/11	INITIAL DESIGN
	OWNER REVIEW
	CITY APPROVAL
	FOR CONSTRUCTION



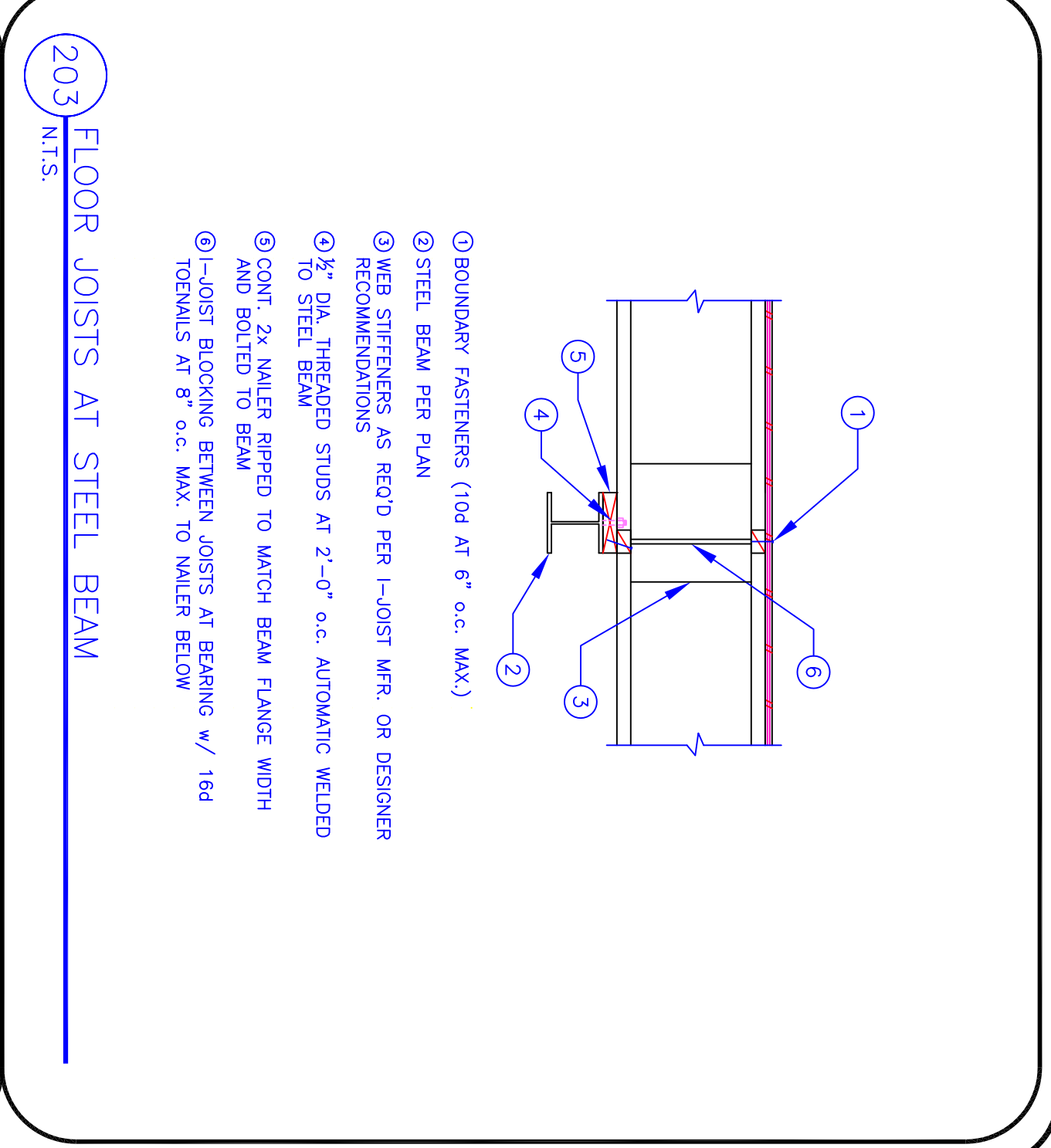
209 STEEL BEAM AT STEEL POST  
NTS

- ① STEEL POST PER PLAN
- ② 1/4" STEEL CAP w/ (2) 5/8" DIA. BOLTS ON BEAM GAUGE
- ③ 1/4" THICK STEEL PLATE WEB STIFFENER EA. SIDE OF BEAM



206 FLOOR JOIST AT STUD WALL  
NTS

- ① BOUNDARY FASTENERS (10d AT 6" o.c. MAX.)
- ② WALL SHEATHING AND NAILING PER FRAMING PLAN NOTES OR SHEAR WALL SCHEDULE WHERE SHEAR WALL OCCURS ON PLAN
- ③ I-JOIST BLOCKING BETWEEN JOISTS AT BEARING FASTENED TO TOP PLATE BELOW w/ 16d AT 8" o.c. MAX.
- ④ WEB STIFFENERS PER I-JOIST MFR. OR DESIGNER RECOMMENDATIONS
- ⑤ PRE-FAB METAL BUILDING WALL PER METAL BUILDING MFR.



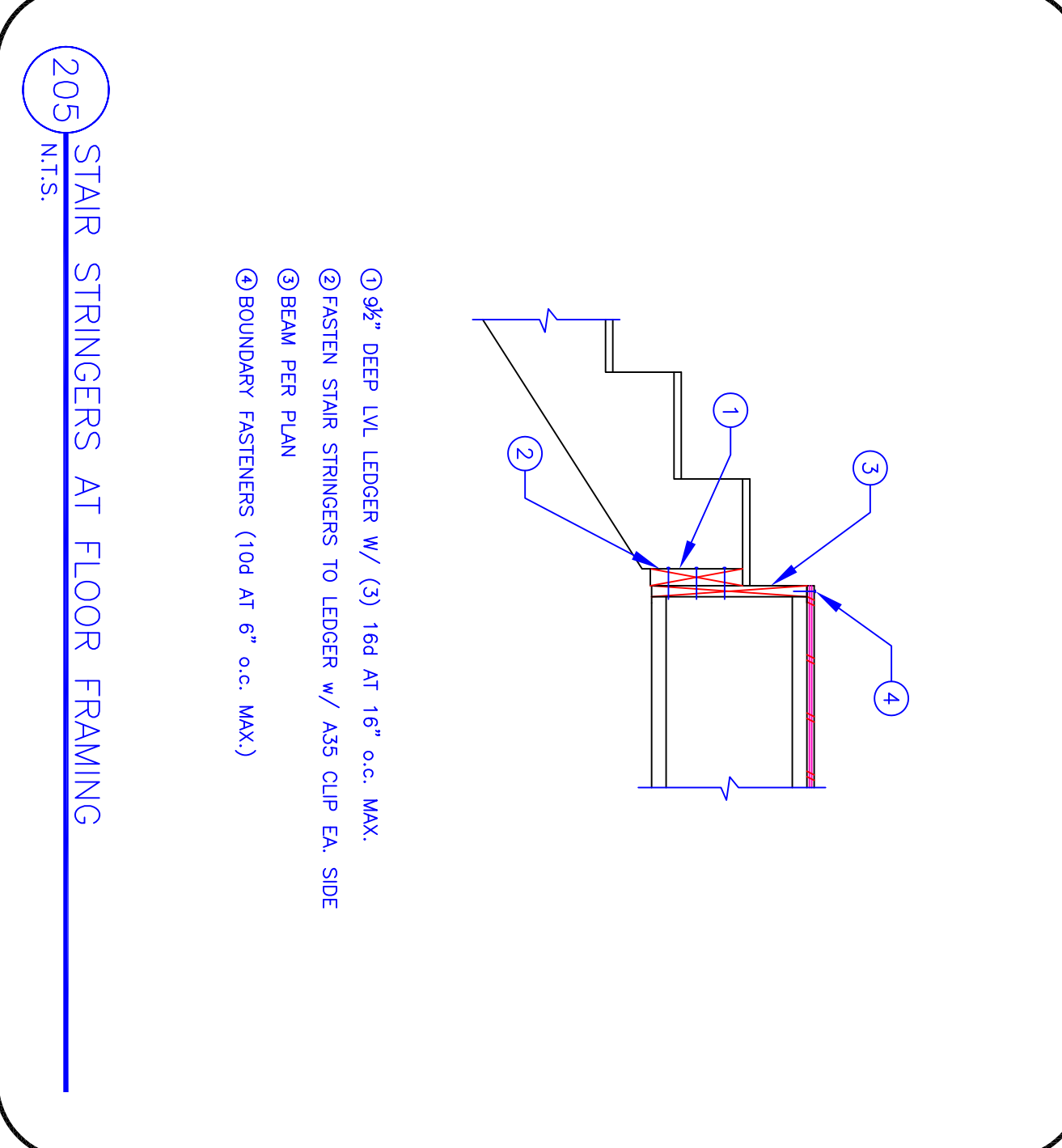
203 FLOOR JOISTS AT STEEL BEAM  
NTS

- ① BOUNDARY FASTENERS (10d AT 6" o.c. MAX.)
- ② STEEL BEAM PER PLAN
- ③ WEB STIFFENERS AS RECD PER I-JOIST MFR. OR DESIGNER RECOMMENDATIONS
- ④ 1/2" DIA. THREADED STUDS AT 2'-0" o.c. AUTOMATIC WELDED TO STEEL BEAM
- ⑤ CONT. 2x WALKER RIPPED TO MATCH BEAM FLANGE WIDTH AND BOLTED TO BEAM
- ⑥ I-JOIST BLOCKING BETWEEN JOISTS AT BEARING w/ 16d TOEWALLS AT 8" o.c. MAX. TO WALKER BELOW



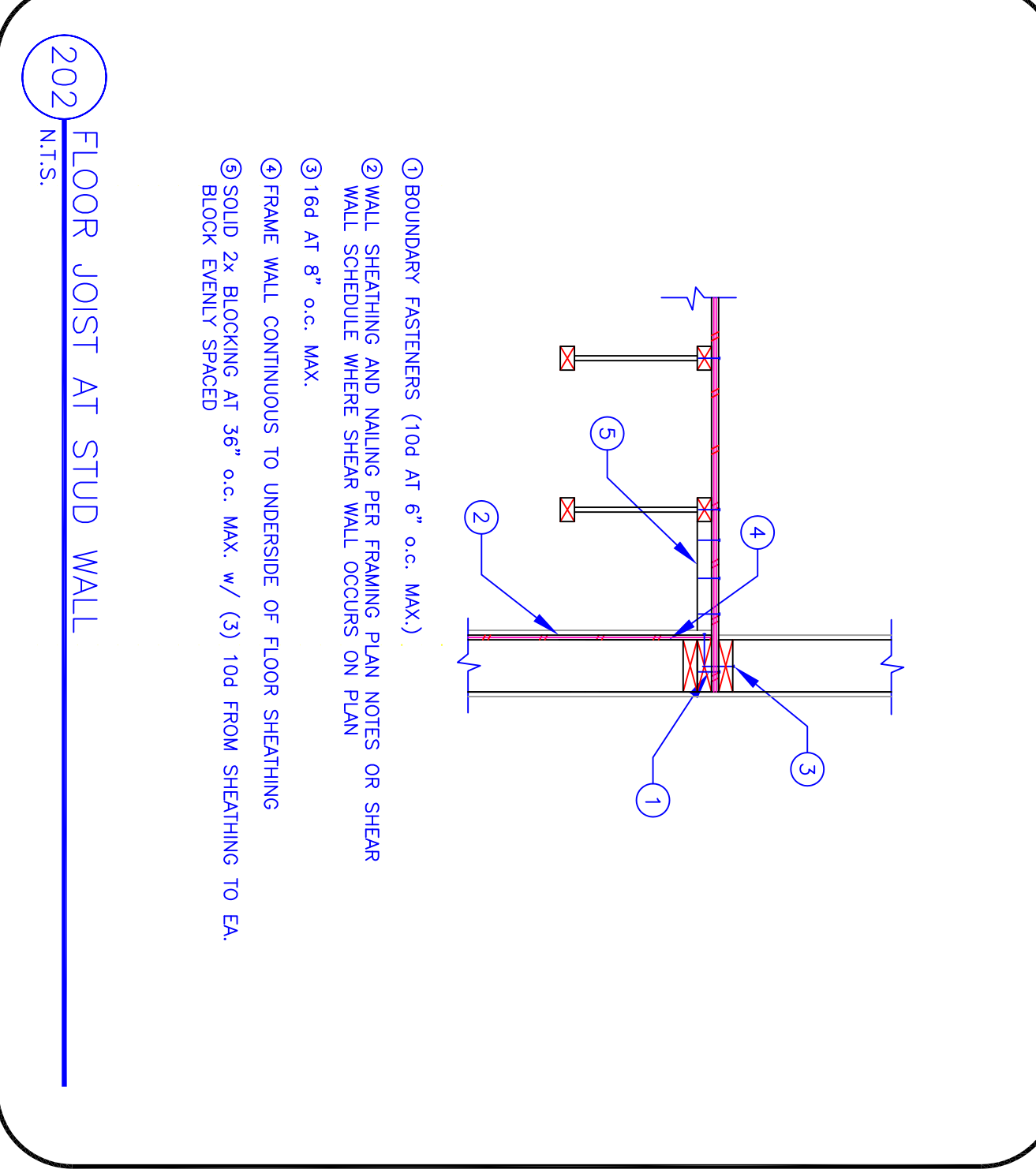
208 HEADER AT KING STUD/POST  
NTS

- ① KING STUDS/POST PER PLAN
- ② TRIMMER STUD
- ③ (3) 16d FROM KING STUD TO HEADER
- ④ AS3 CLIP FROM HEADER TO KING STUD. CLIP MAY BE INSTALLED EITHER ON TOP OR BOTTOM OF HEADER
- ⑤ HEADER PER PLAN



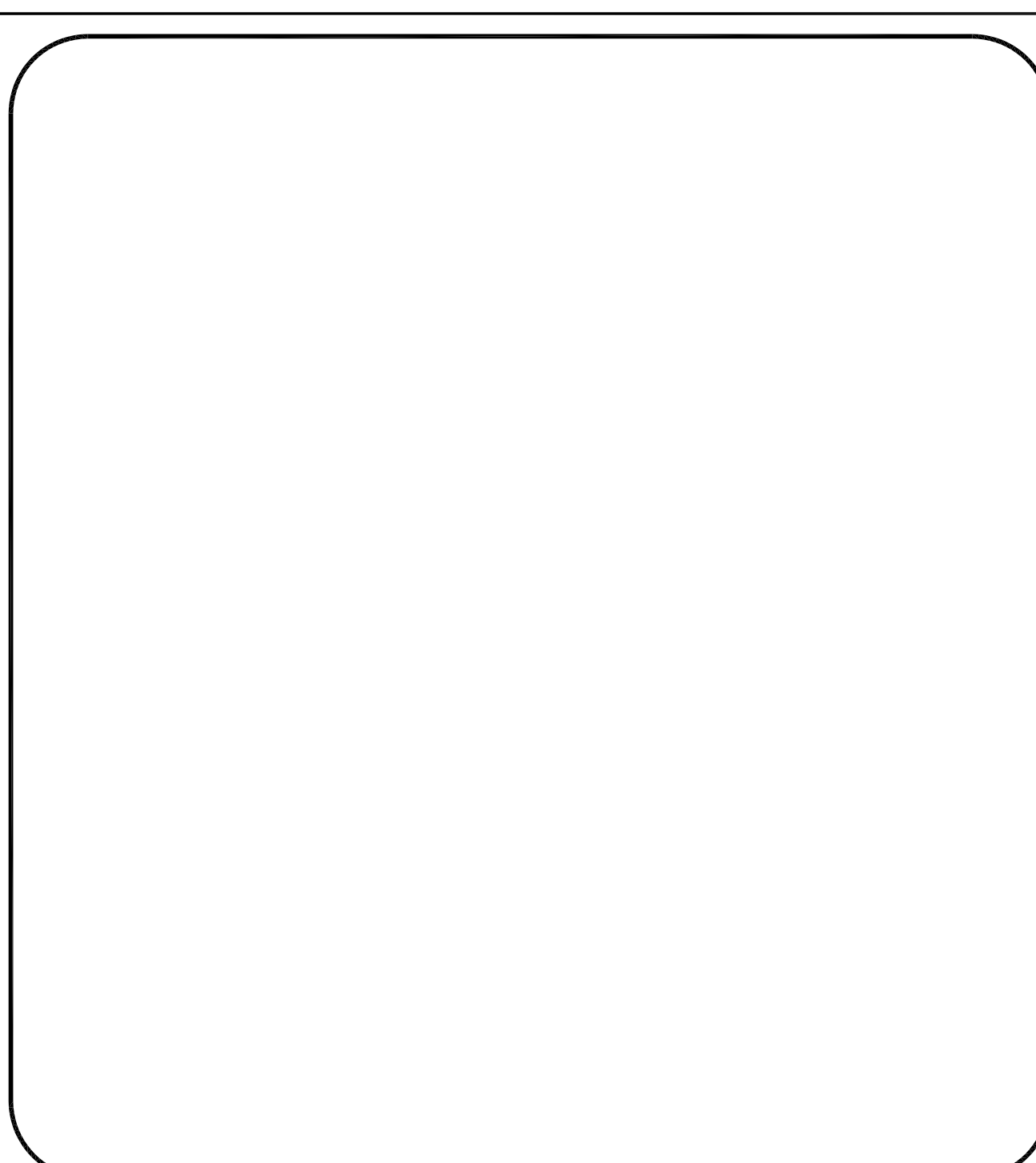
205 STAIR STRINGERS AT FLOOR FRAMING  
NTS

- ① 9/8" DEEP LVL LEDGER w/ (3) 16d AT 16" o.c. MAX.
- ② FASTEN STAIR STRINGERS TO LEDGER w/ AS3 CLIP EA. SIDE
- ③ BEAM PER PLAN
- ④ BOUNDARY FASTENERS (10d AT 6" o.c. MAX.)



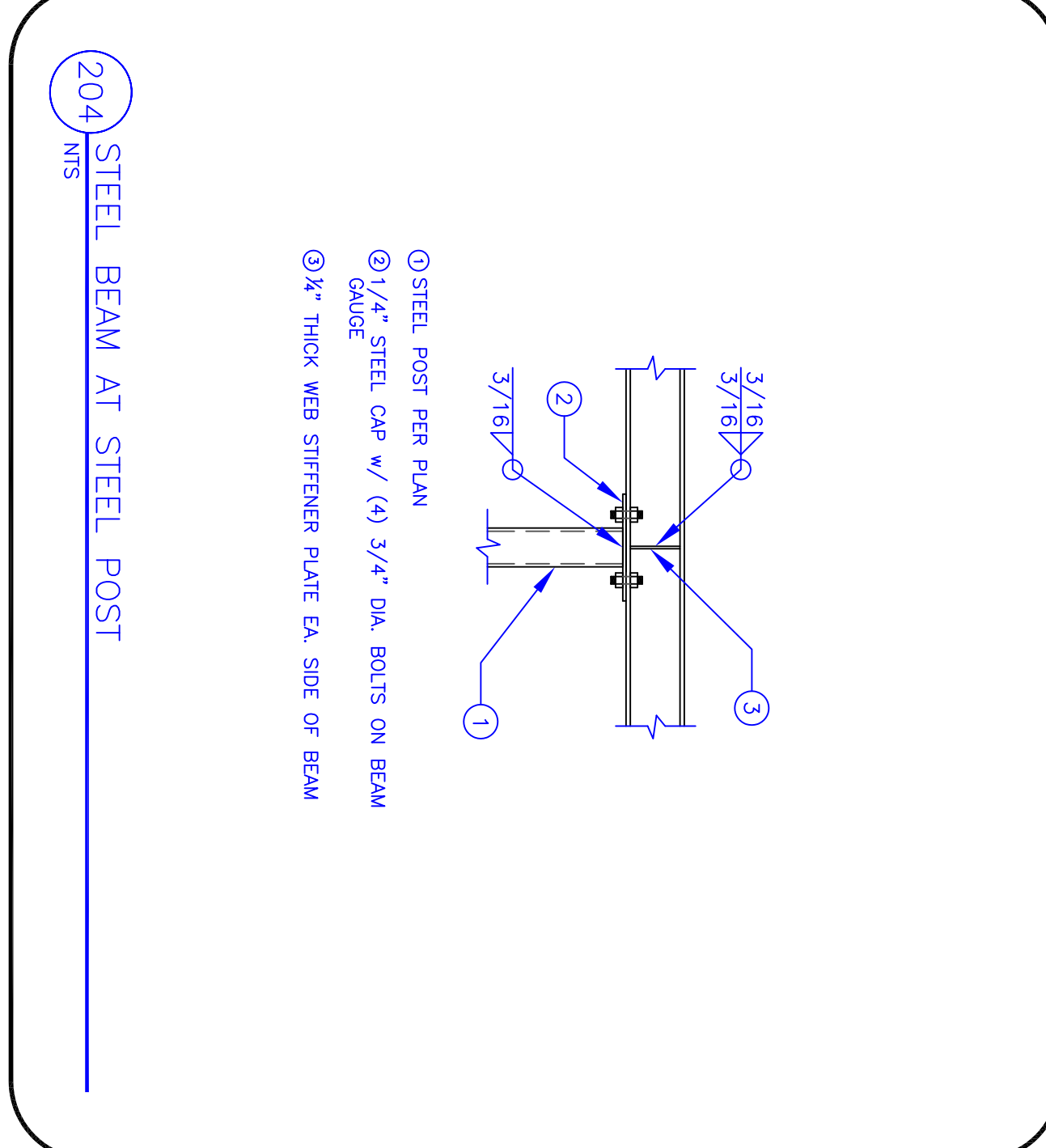
202 FLOOR JOIST AT STUD WALL  
NTS

- ① BOUNDARY FASTENERS (10d AT 6" o.c. MAX.)
- ② WALL SHEATHING AND NAILING PER FRAMING PLAN NOTES OR SHEAR WALL SCHEDULE WHERE SHEAR WALL OCCURS ON PLAN
- ③ 16d AT 8" o.c. MAX.
- ④ FRAME WALL CONTINUOUS TO UNDERSIDE OF FLOOR SHEATHING
- ⑤ SOLID 2x BLOCKING AT 36" o.c. MAX. w/ (3) 10d FROM SHEATHING TO EA. BLOCK. ENDS SHAVED



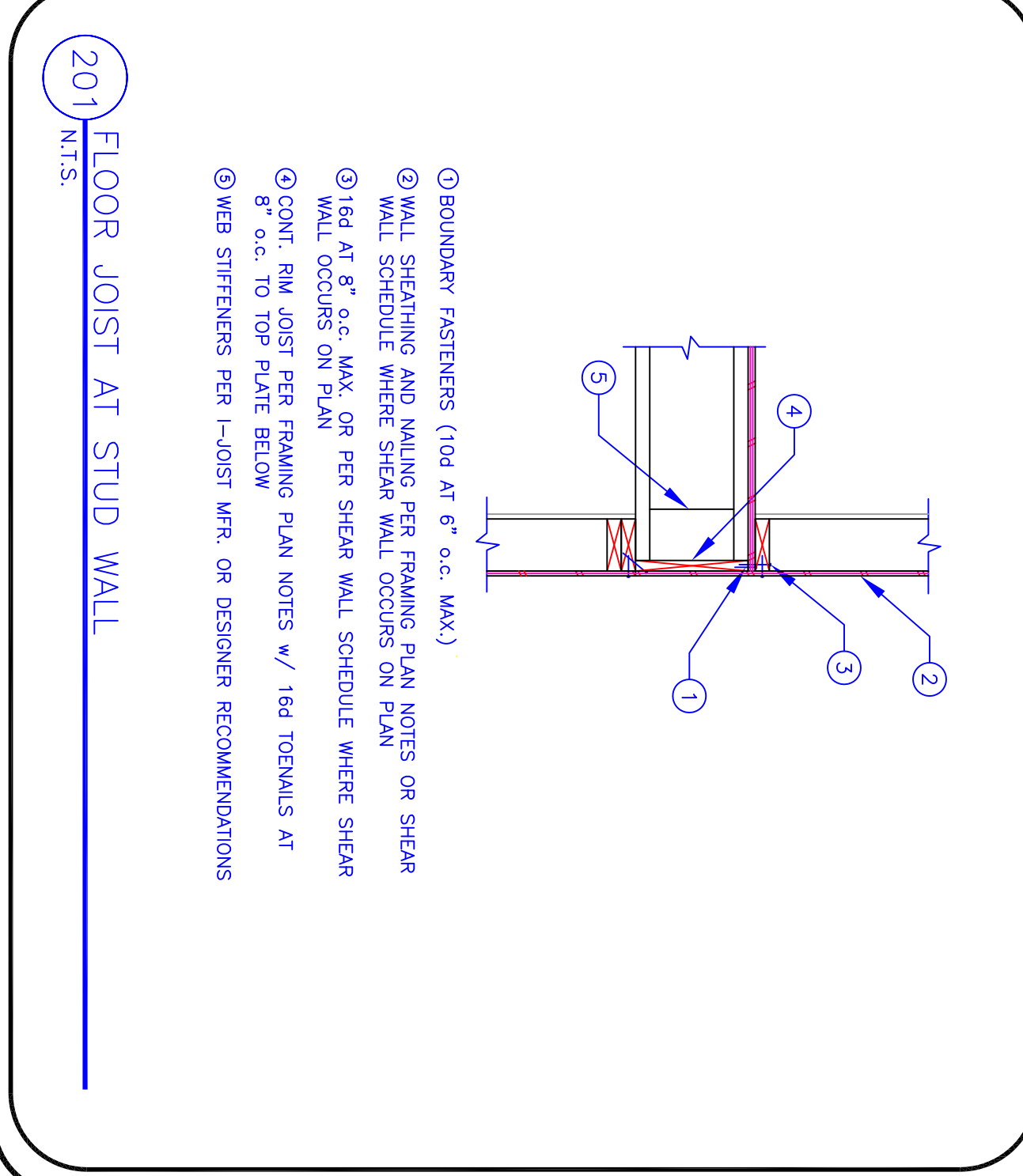
207 STAIR STRINGERS AT BEARING WALL  
NTS

- ① 2x4 BEARING STUD WALL AT MID-SPAN OF STAIR STRINGERS
- ② BIRD'S MOUTH CUT STAIR STRINGERS AT STUD WALL
- ③ STAIR STRINGERS PER PLAN



204 STEEL BEAM AT STEEL POST  
NTS

- ① STEEL POST PER PLAN
- ② 1/4" STEEL CAP w/ (4) 3/4" DIA. BOLTS ON BEAM GAUGE
- ③ 1/2" THICK WEB STIFFENER PLATE EA. SIDE OF BEAM



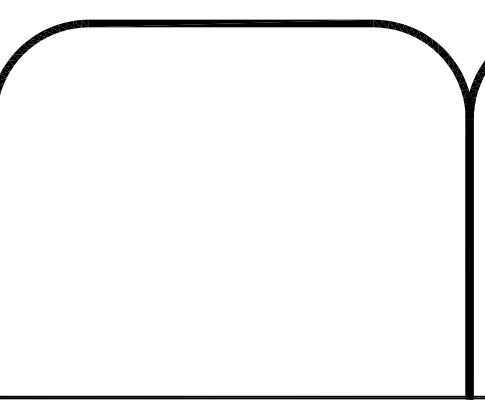
201 FLOOR JOIST AT STUD WALL  
NTS

- ① BOUNDARY FASTENERS (10d AT 6" o.c. MAX.)
- ② WALL SHEATHING AND NAILING PER FRAMING PLAN NOTES OR SHEAR WALL SCHEDULE WHERE SHEAR WALL OCCURS ON PLAN
- ③ 16d AT 8" o.c. MAX. OR PER SHEAR WALL SCHEDULE WHERE SHEAR WALL OCCURS ON PLAN
- ④ CONT. RIM JOIST PER FRAMING PLAN NOTES w/ 16d TOEWALLS AT 8" o.c. TO TOP PLATE BELOW
- ⑤ WEB STIFFENERS PER I-JOIST MFR. OR DESIGNER RECOMMENDATIONS

DATE: MAY. 2011  
SHEET: S4.0

FILE: KC  
DRAWN BY: RMD

**TC ENGINEERING, PC**  
A "DESIGN-BUILD" FIRM  
EXCELLENCE...ON TIME!  
DANIEL W. THEBEAU, P.E.  
P.O. BOX 55, KANAB, UTAH 84741  
(435)644-2031 (888)644-2031  
(435)689-0155



**KC FAIRGROUNDS BUILDING  
FRAMING DETAILS  
KANE COUNTY, UTAH**  
SCALE= NTS  
REDUCE SCALE BY 1/2 FOR 11x17 DRAWINGS

DATE:	REVISION:
5/16/11	INITIAL DESIGN
	OWNER REVIEW
	CITY APPROVAL
	FOR CONSTRUCTION