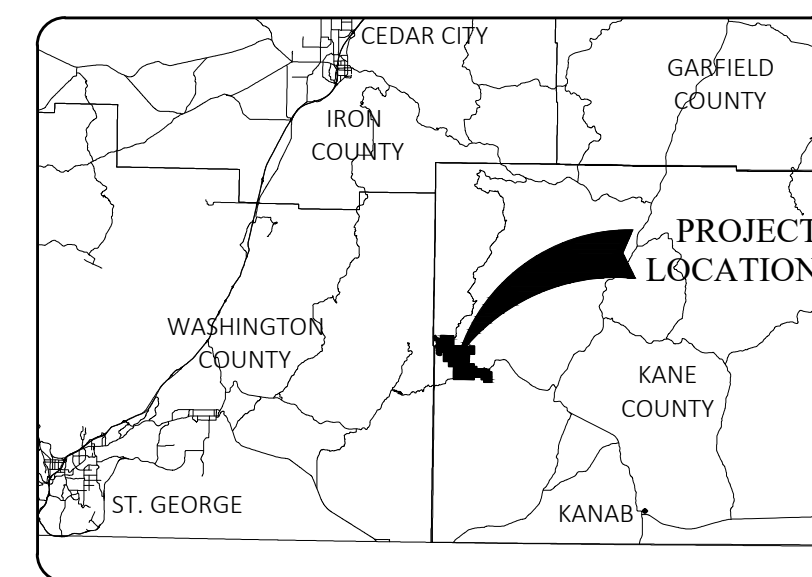
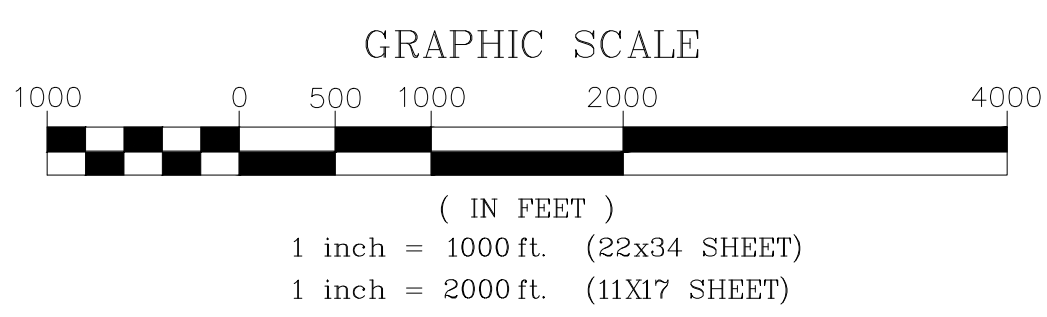
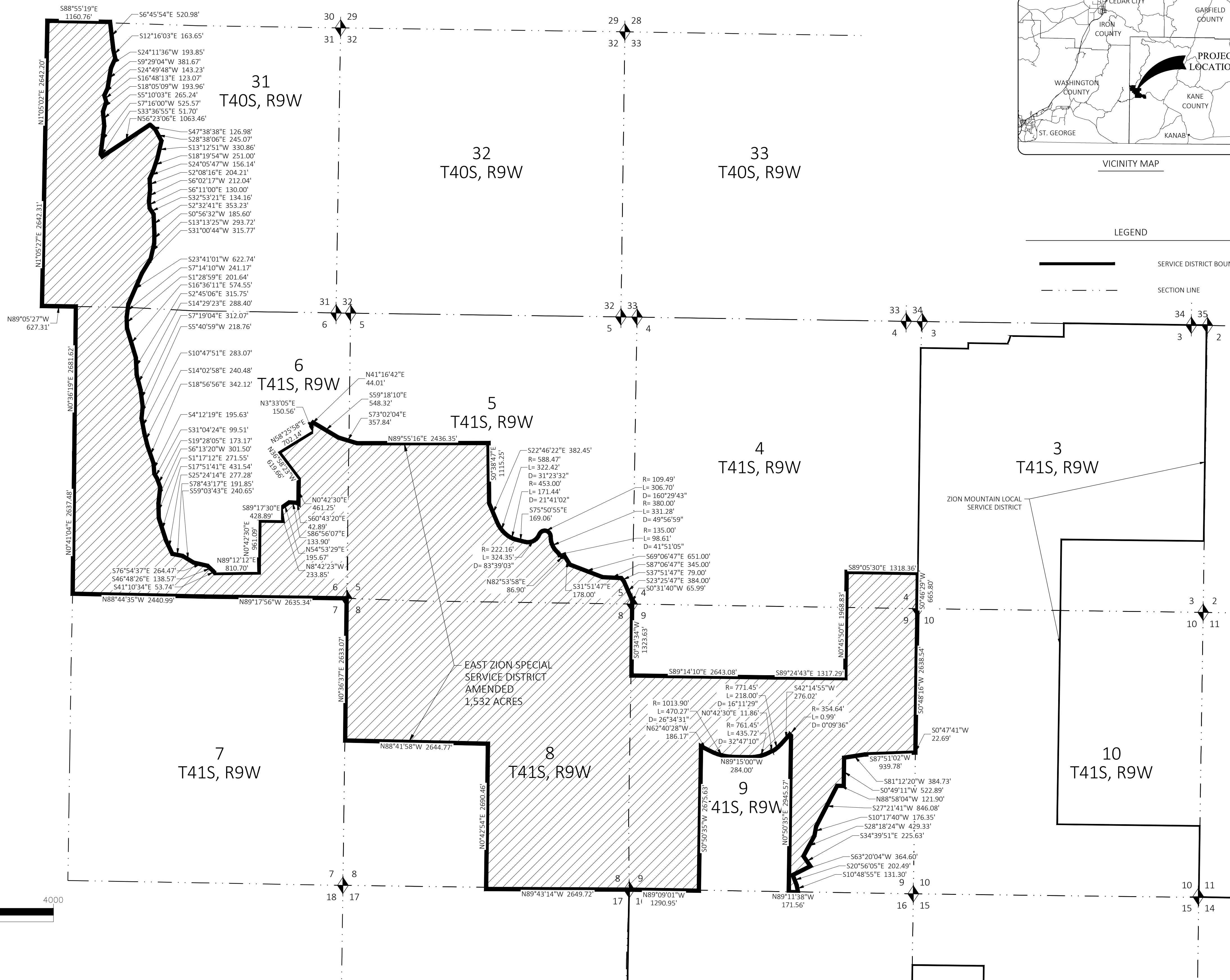


**EAST ZION SPECIAL SERVICE DISTRICT AMENDED**  
 Portion of Section 31, Township 40 South, Range 9 West, Salt Lake Base and Meridian, and  
 Portions of Sections 4, 5, 6, 8, and 9, Township 41 South, Range 9 West, Salt Lake Base and Meridian.



LEGEND

- SERVICE DISTRICT BOUNDARY
- SECTION LINE



NO.	DATE	DESCRIPTION

REVISIONS

**ALPHA ENGINEERING**  
 43 South 100 East, Suite 100 • St. George, Utah 84770  
 T: 435.628.6500 • F: 435.628.6553 • alphaengineering.com

**EAST ZION SPECIAL SERVICE DISTRICT**  
 KANE COUNTY, UTAH

TITLE	PROJECT #	332-07
NAME	RS	
DATE	3/17/2021	
SCALE	AS NOTED	
SHEET	1	1 OF 1
FILE		